

Anti-Nucleostemin Rabbit Monoclonal Antibody
Catalog # ABO15383**Specification**

Anti-Nucleostemin Rabbit Monoclonal Antibody - Product Information

Application	WB, IF, ICC, FC
Primary Accession	Q9BVP2
Host	Rabbit
Isotype	IgG
Reactivity	Human
Clonality	Monoclonal
Format	Liquid

Description

Anti-Nucleostemin Rabbit Monoclonal Antibody . Tested in WB, ICC/IF, Flow Cytometry applications.
This antibody reacts with Human.

Anti-Nucleostemin Rabbit Monoclonal Antibody - Additional Information

Gene ID 26354

Other Names

Guanine nucleotide-binding protein-like 3, E2-induced gene 3 protein, Novel nucleolar protein 47, NNP47, Nucleolar GTP-binding protein 3, Nucleostemin, GNL3, E2IG3, NS

Calculated MW

65 kDa KDa

Application Details

WB 1:500-1:2000
ICC/IF 1:50-1:200
FC 1:50

Contents

Rabbit IgG in phosphate buffered saline, pH 7.4, 150mM NaCl, 0.02% sodium azide and 50% glycerol, 0.4-0.5mg/ml BSA.

Immunogen

A synthesized peptide derived from human Nucleostemin

Purification

Affinity-chromatography

Storage

Store at -20°C for one year. For short term storage and frequent use, store at 4°C for up to one month. Avoid repeated freeze-thaw cycles.

Anti-Nucleostemin Rabbit Monoclonal Antibody - Protein Information

Name GNL3

Synonyms E2IG3, NS

Function

May be required to maintain the proliferative capacity of stem cells. Stabilizes MDM2 by preventing its ubiquitination, and hence proteasomal degradation (By similarity).

Cellular Location

Nucleus {ECO:0000250|UniProtKB:Q811S9}. Nucleus, nucleolus. Note=Shuttles between the nucleus and nucleolus. {ECO:0000250|UniProtKB:Q811S9}

Tissue Location

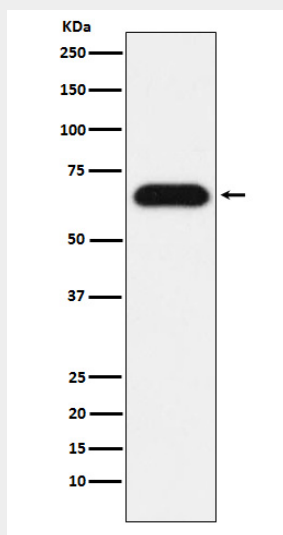
Increased levels in lung tissue in cancer patients.

Anti-Nucleostemin Rabbit Monoclonal Antibody - Protocols

Provided below are standard protocols that you may find useful for product applications.

- [Western Blot](#)
- [Blocking Peptides](#)
- [Dot Blot](#)
- [Immunohistochemistry](#)
- [Immunofluorescence](#)
- [Immunoprecipitation](#)
- [Flow Cytometry](#)
- [Cell Culture](#)

Anti-Nucleostemin Rabbit Monoclonal Antibody - Images



Western blot analysis of Nucleostemin expression in HeLa cell lysate.